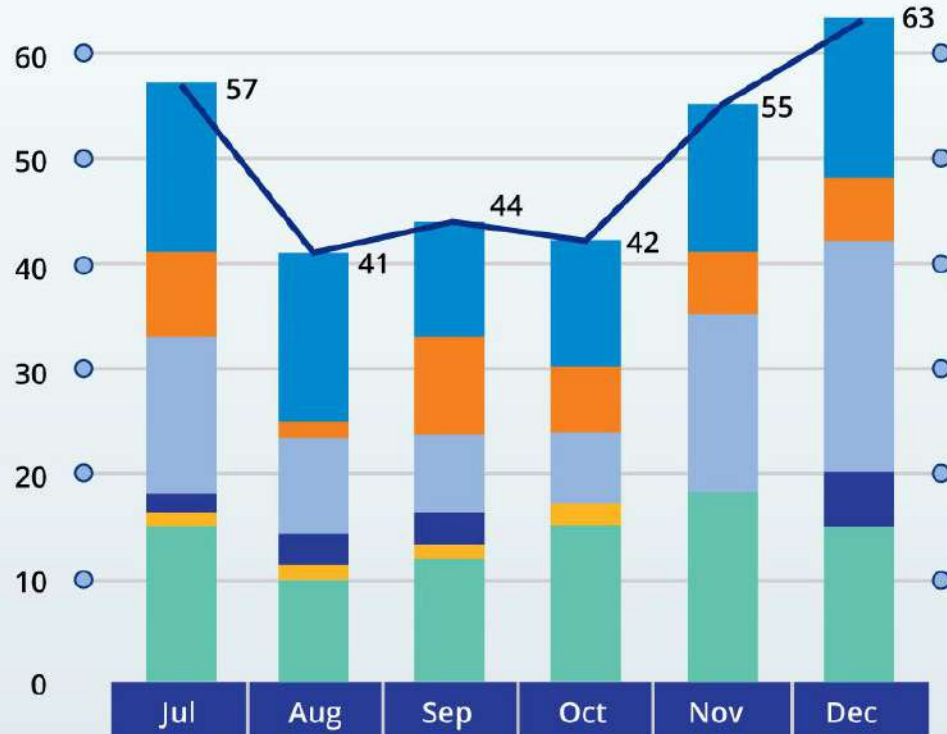


JRC Census 2022

Number of Cases



	Jul	Aug	Sep	Oct	Nov	Dec
Knee Replacement	16	16	11	12	14	15
Hip Replacement	8	2	10	6	6	6
Arthroscopy / ACL	15	9	7	7	17	22
HAND	2	3	3	0	0	5
TRAUMA	1	1	1	2	0	0
Others	15	10	12	15	18	15
Total Joint Cases	57	41	44	42	55	63